

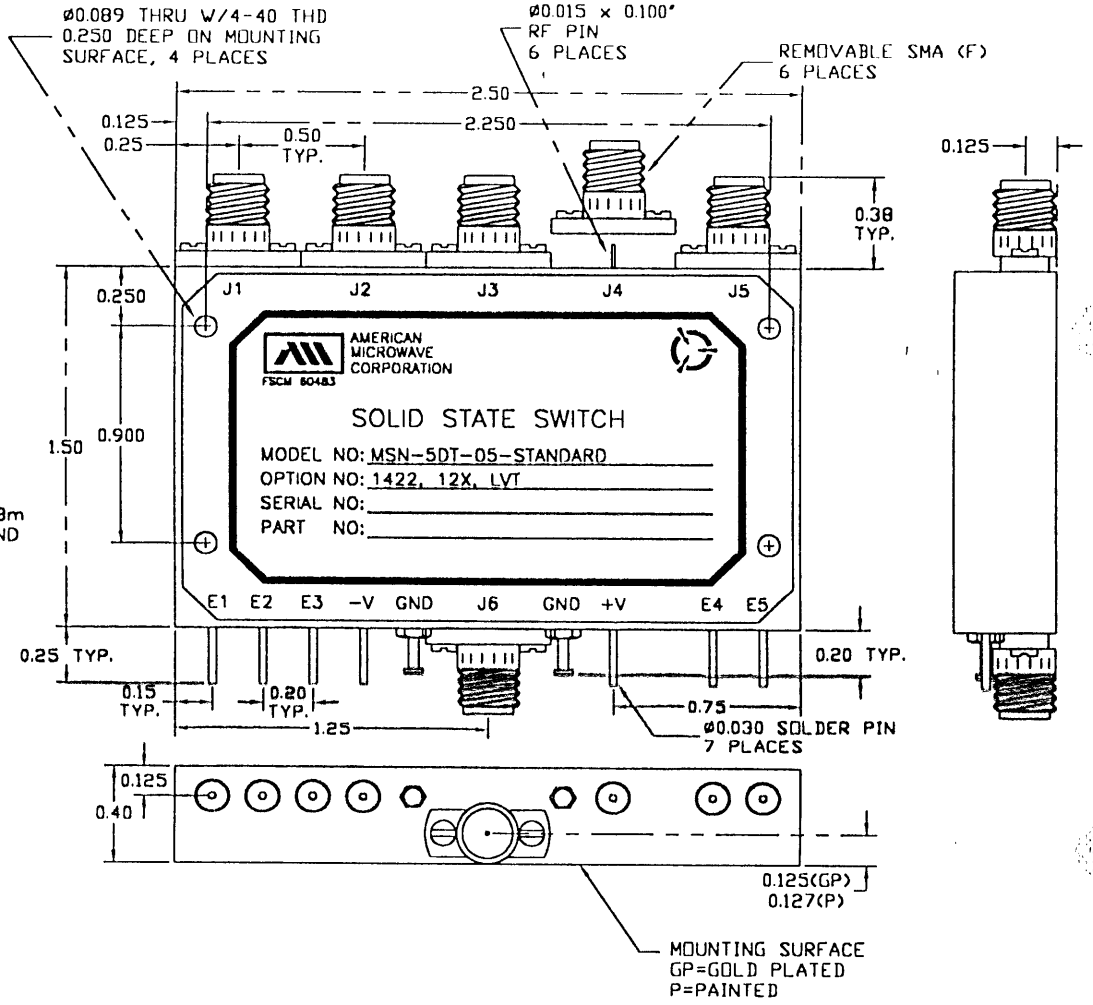
DESCRIPTION:

AMC MODEL MSN-5DT-05-STANDARD OPTION 1422, 12X, LVT IS A SINGLE POLE FIVE THROW, ABSORPTIVE/NON-REFLECTIVE SWITCH MODULE WITH VERY LOW INSERTION LOSS, HIGH ISOLATION AND WITH INTEGRAL TTL DRIVER, DESIGNED FOR LOW VIDEO TRANSIENTS AND LOW HARMONIC DISTORTION OVER 14 TO 22 GHz BANDWIDTH.

ZONE		REV.	DESCRIPTION	DATE	APPROVED
		-	ORIGINAL RELEASE	8/18/99	<i>TMS</i>

SPECIFICATIONS:

- FREQUENCY:14 GHz TO 22 GHz
- INSERTION LOSS:5.0 dB MAXIMUM, 4.0 dB TYPICAL
- ISOLATION (ANY PORT):80 dB MINIMUM
- VSWR (ANY PORT, ANY STATE):2.2:1
- SWITCHING SPEED:<30 ns
(50% TTL TO 10%/90% RF)
- RISE/FALL TIME:<10 ns
(10% TO 90% RF)
(90% TO 10% RF)
- MAXIMUM TOGGLE RATE:>20 MHz
(50% DC):
- RF CONNECTORS:SMA FEMALE
- DC POWER SUPPLY:+5V ±10% @ 250 mA MAXIMUM
.....-5V ±10% @ 100 mA MAXIMUM
- CONTROL:TTL LOGIC "0"=ON "1"=OFF
- CONTROL INTERFACE:DC SOLDER PINS
- HARMONIC DISTORTION:≤ 70dB @ +10 dBm I/P
- FLATNESS ACROSS BAND:±1.5dB, ±1.0 dB TYPICAL
(ON STATE)
- VIDEO LEAKAGE:100 mV PEAK TO PEAK, 500 MHz BANDWIDTH (-60 dBm TO -65 dBm LEAKAGE POWER OR ENERGY IN THE BAND OF INTEREST)
- 1 dB COMPRESSION POINT:+20 dBm
- 2 TONE 3RD ORDER INTERCEPT POINT, POUT OdBm:+35 dBm
- 2 TONE 2RD ORDER INTERCEPT POINT, POUT OdBm:+55 dBm
- 0.1 dB PASS BAND:14 GHz TO 22 GHz
- WEIGHT:3.5 OUNCES TYPICAL
- SIZE:2.50 (L) X 1.50 (W) X 0.40 (H)



NOTE:
DT=WITH DRIVER, NON-REFLECTIVE/ABSORPTIVE

ENVIRONMENTAL RATINGS:

- TEMPERATURE:-10°C TO +55°C (OPERATING)
.....-40°C TO +71°C (STORAGE)
- HUMIDITY:95% OVER TEMPERATURE
- SHOCK:MIL-STD-202F, METHOD 213B COND. B
- VIBRATION:MIL-STD-202F, METHOD 204D COND. B
- ALTITUDE:MIL-STD-202F, METHOD 105C COND. B
- TEMPERATURE CYCLE:MIL-STD-202F, METHOD 107D COND. A

NOTE: THE ABOVE SPECIFICATIONS ARE SUBJECT TO CHANGE OR REVISION

ALL DIMENSIONS ARE IN INCHES
TOLERANCES:
X.XX ±0.020
X.XXX ±0.010

PART NO.		AMERICAN MICROWAVE CORPORATION FREDERICK, MARYLAND	
APPROVALS	DATE	TITLE	
DRAWN <i>WSP</i>	8/18/99	OUTLINE DRAWING MSN-5DT-05-STANDARD OPTION 1422, 12X, LVT SOLID STATE SWITCH	
CHECKED <i>PA</i>	11/07/99	SIZE	REV.
ISSUED		A	-
		FSCM NO. 60483	DWG NO. 100-4166-5
		SCALE N/S	SHEET 1 of 1